

APPROVED MAIN DISTRIBUTOR
(SAUDI ARABIA)

GULF SPECIALIST TRADING



ELASTOMER EXPANSION

J O I N T S

[Saudi Arabia Version]



www.doshinrubber.com

DOSHIN RUBBER

[Doshin Rubber Engineering](#), established in 1978, is the pioneer in manufacturing laminated bridge bearing pad in Malaysia. With over 30 years of experience in providing rubber solution for the civil engineering & construction industries, Doshin Rubber is today a subsidiary of [Kossan Group](#) of companies, a public listed company at the Bursa Malaysia.

[Doshin](#) stands as a [leader](#) in the design and production of engineered rubber products thanks to scientific research, engineering design, material and product constant development and full control of production technology, Doshin combines state -of-the-art technology, experienced professional and innovative products as solution to clients' most difficult challenges.

RANGE OF PRODUCTS THAT INCLUDED:

- ✓ Marine Dock Fenders And Systems
- ✓ High Damping Rubber Bearings (HRDB)
- ✓ Lead Rubber Bearings (LRB)
- ✓ Elastomeric Laminated Bearing Pads
- ✓ Rubber Expansion Joints, Finger Joints and Modular Joints
- ✓ Floating Slab Track Bearing Pads for the Rail Industry
- ✓ Mechanical Steel Pot Bearings

Elastomer Expansion Joints

Doshin Elastomer Expansion Joints are comprised of steel angles and steel bridging plate system encased in flexible elastomer.

Doshin Elastomer Expansion Joint is supplied in module lengths designed to be bolted to the structural deck on either side of the expansion joint in the structure.

Features

- Heavy duty and long durability
- Movement accommodation up to 330mm
- Encased in corrosive resistant elastomer
- Anti-skidding & water tightness



DR 50
DR 65
DR 75

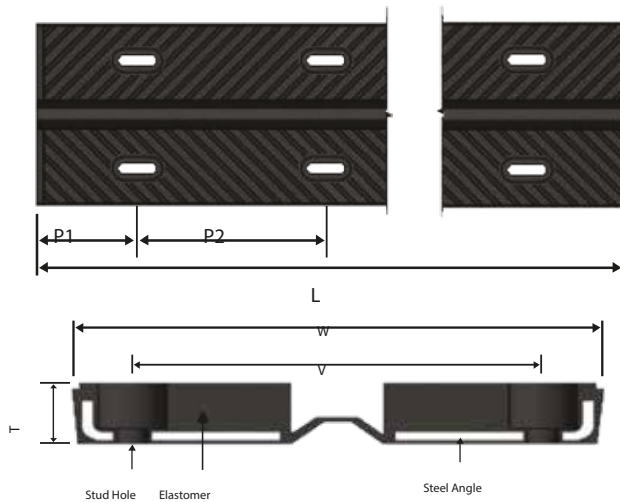


DR 100
DR 165
DR 230
DR 330

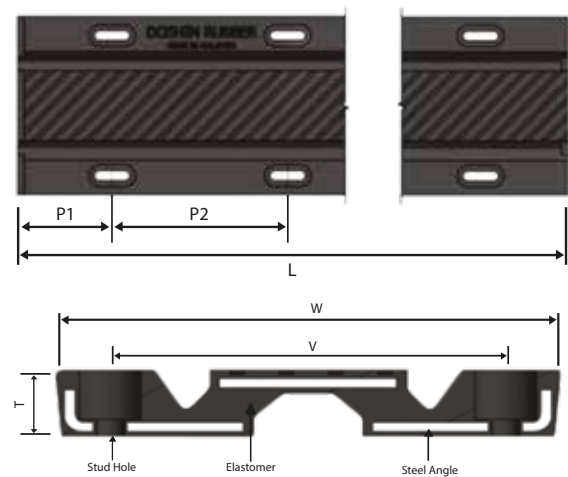


Elastomer Expansion Joints Models

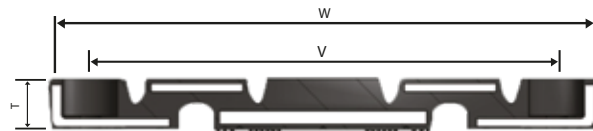
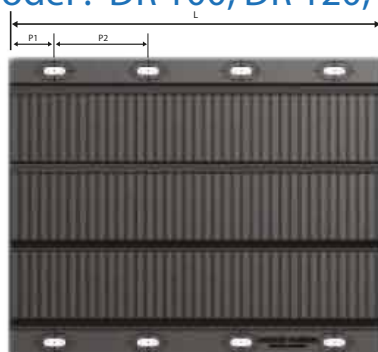
For Model : T20 , T30



For Model : DR 50, DR 65, DR 75



For Model : DR 100, DR 120, DR 165, DR 230, DR 330



Specification

Model	Movement Limit	T	W	V	P1	P2	L	Stud(M) or Bolt Diameter	Stud Length (mm)	No. of Stud (pcs)	Weight (kg)	* Construction Gap	** Max Gap
T 20	±10.0	33	256	180	112	332	1220	12	160	8	17	10	25
T 30	±15.0	40	300	195	112.5	330	1215	12	160	8	20	15	35
DR 50	±25.0	40	260	200	125	250	2000	12	160	16	37	25	60
DR 65	±32.5	50	356	280	165	334	2000	16	160	12	70	32	95
DR 75	±37.5	52	432	342	125	250	2000	16	180	16	95	37	110
DR 100	±50.0	54	590	500	167.5	333	2000	20	210	12	170	50	150
DR 120	±60.0	60	640	550	130	290	2000	20	220	14	215	60	160
DR 165	±82.5	78	716	610	162.5	335	2000	24	220	12	280	82	180
DR 230	±115.0	96	890	790	152.5	305	1220	24	220	8	250	115	273
DR 330	±165.0	127	1210	1080	152.5	305	1220	30	250	8	450	165	370

All unit in mm, unless stated otherwise

* Nominal gap at mid-deck temperature

** Max gap refers to maximum contraction movement of the expansion joint (i.e. during winter)

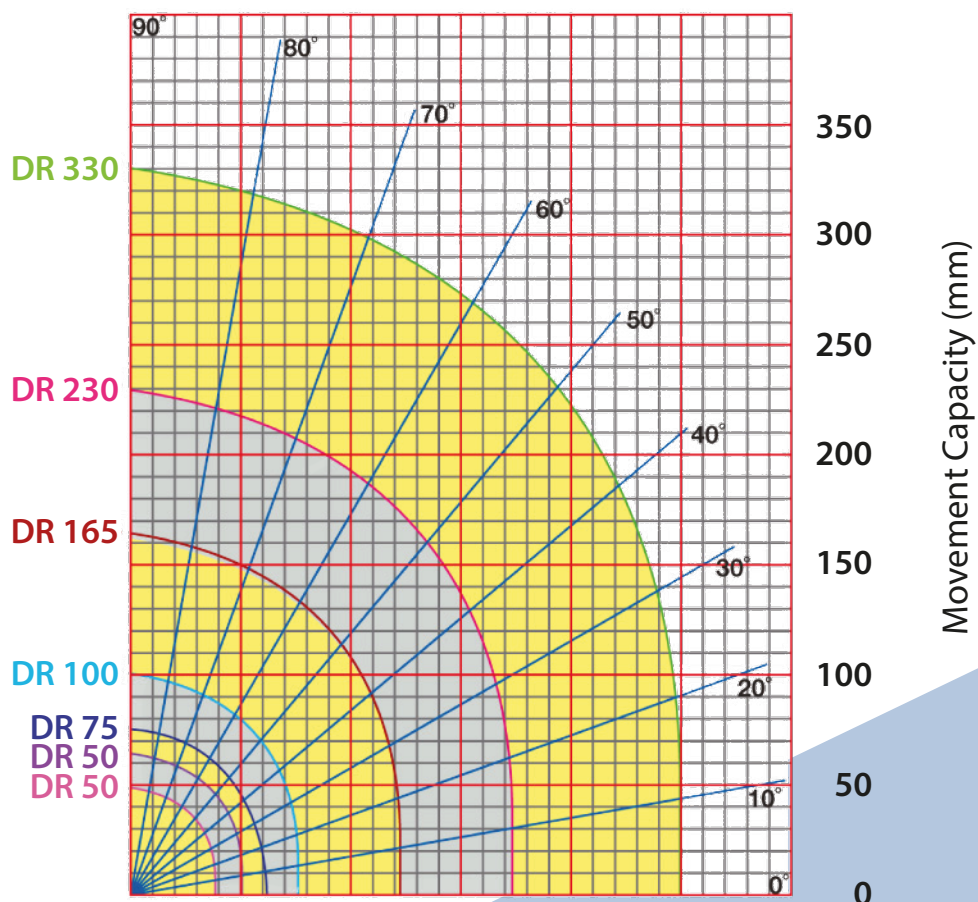
Elastomer Properties

PROPERTIES	REQUIREMENT	TEST METHOD
Hardness (Shore A)	60 ± 5	ASTM D 2240
Tensile, MPa	13 MPa, min	ASTM D 412
Elongation at break, %	300% , min	ASTM D 412
Compression set, %	30%, max (22 hours at 70°C)	ASTM D 395 Method B
Adhesive resistance, N/mm	7N/mm, min	ASTM D 429
Ozone resistance (25pphm/72hrs/40°C/20% strain)	No crack	ASTM 1149

Steel Properties

Steel	ASTM A36, BSEN S275JR, JIS SS400, or equivalent
-------	---

Graph of Doshin Rubber Expansion Joint Capacity in Skew Angle



Projects Reference



➤ Others Products Range



Marine Fender



Modular Joints



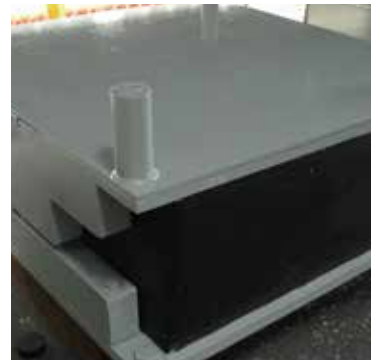
High Damping Rubber Bearing



Expansion Joint



Mining Rubber Product



Base Isolation HDRB



Structural Pot Bearing



Floating Slab track bearing



Laminated Bearing



Made in **Malaysia**
QUALITY YOU CAN TRUST

DOSHIN RUBBER PRODUCTS (M) SDN BHD (114386-H)

Lot PT 34252, Jalan Sekolah, Rantau Panjang,
42100 Klang, Selangor Darul Ehsan, Malaysia.

T +603-3290 5619 ; 3290 5621 ; 3290 5631

F +603-3290 5642

Email: doshin@kossan.com.my

A subsidiary of



STRETCHING LIMITS • SINCE 1979